

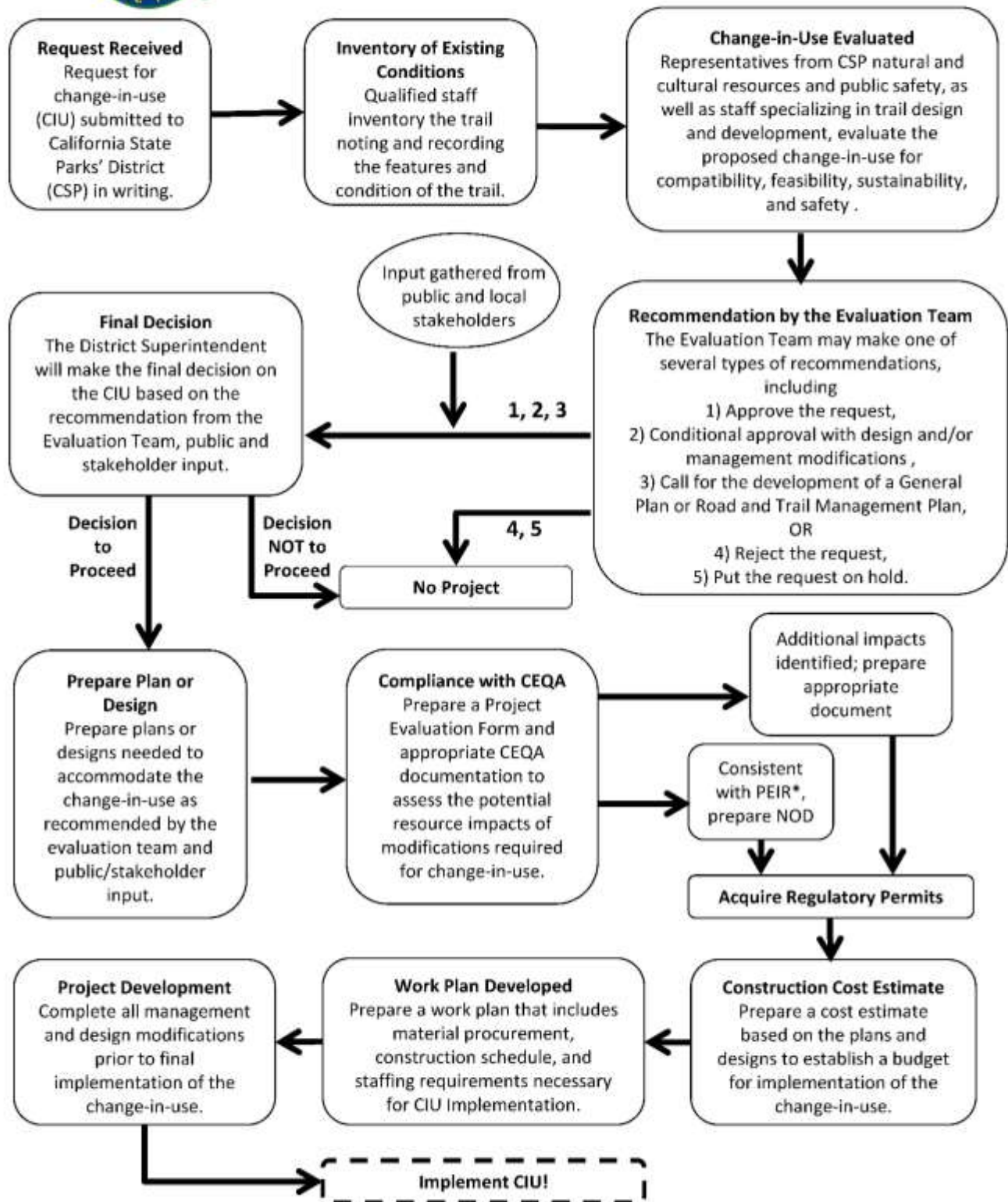
Appendix D. Change-In-Use Flow Chart

The Change-in-Use (CIU) process is used by the Department to facilitate the review of qualifying change-in-use proposals that would add uses to or remove uses from existing recreational roads and trails in the state park system. The process is intended to facilitate and make consistent the consideration of changes in non-motorized recreational uses on existing state park roads and trails that best accommodate accessibility and recreational activities appropriate for each road or trail facility. The process provides the Department with an objective and consistent process and evaluation tool to assess change-in-use proposals that modify existing roads and trails.

Below is a flow chart that describes the CIU process.



Trail Change-In-Use Process at a Glance California State Parks



*Program Environmental Impact Report (PEIR) is a first-tier document to address the broad environmental effects that could be associated with changes-in-use. For more information, see www.parks.ca.gov.